

# Worksheet 1.1 Plant organs



Each plant organ has a particular function or functions. Here is a list of functions.

**absorbs water**

**absorbs energy from sunlight**

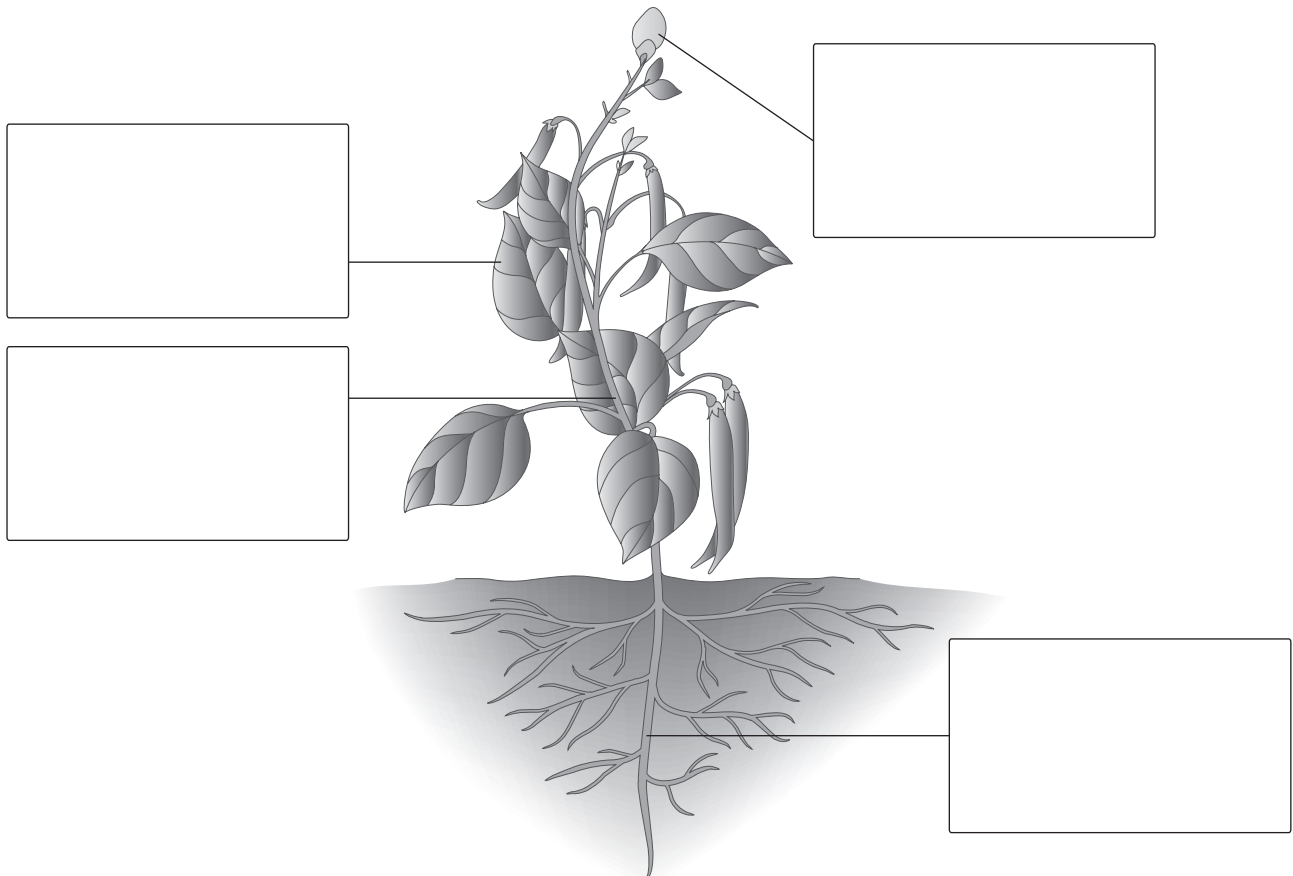
**holds plant in the soil**

**makes food**

**makes seeds for reproduction**

**supports leaves and flowers**

Write each of these functions in the correct box on the diagram. (Some boxes may contain more than one function.)



# Worksheet 1.2 Human organ systems



The diagrams show some of the organs in the human body.

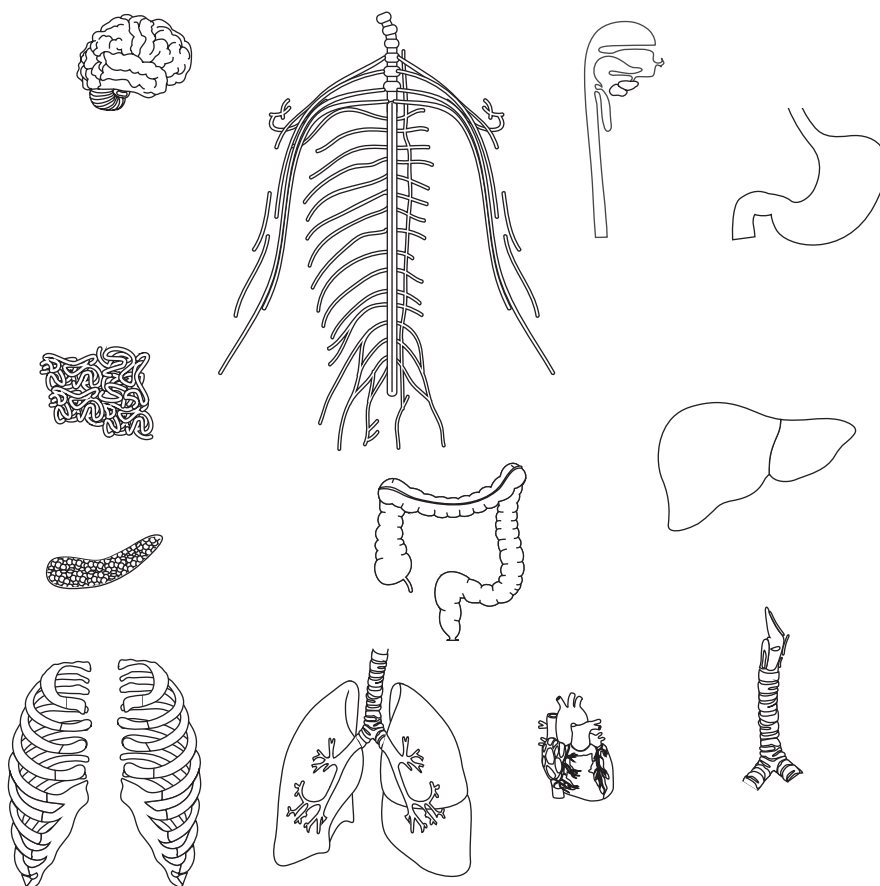
- 1 Colour each of the organs according to the organ system to which it belongs.

**respiratory system**      green

**digestive system**      yellow

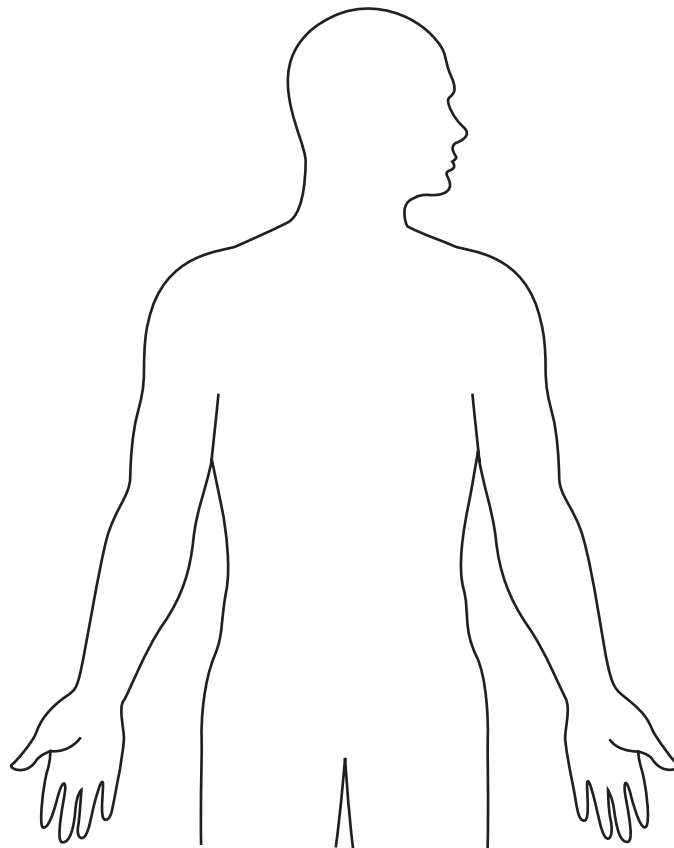
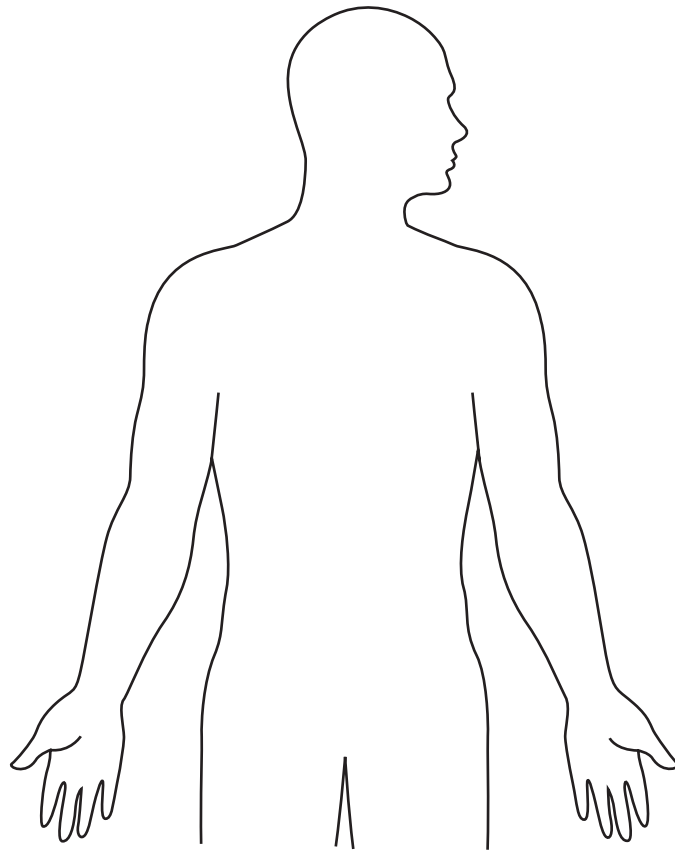
**nervous system**      blue

**circulatory system**      red



- 2 Cut out each organ.
- 3 On one of the outlines of the human body (on page 3), stick the organs belonging to the respiratory system and digestive system in the correct positions. (You'll need to stick some of the organs over the top of others.)
- 4 On the other outline of the human body (on page 3), stick the organs belonging to the nervous system and circulatory system in the correct positions.

Blank page in case of two-sided printing





# Worksheet 1.4 Arthritis

Read the information about arthritis. Then answer the questions.

**Many people get arthritis as they get older. Arthritis makes joints feel painful and stiff.**

**Arthritis happens when the cartilage covering the bones at a joint gets damaged. It becomes rough, instead of being smooth and slippery. Sometimes, the cartilage is so badly damaged that it does not cover the ends of the bones. Each time the bones move, they rub against each other.**

**The joints that are most often affected are the knees, fingers and hips.**

**Artificial joints are sometimes used to replace damaged joints. Artificial joints are made of metal and plastic. One metal that is often used is titanium. This metal does not react with the fluids inside the body. The surfaces of the artificial joints are very smooth.**

- 1** Describe what happens to a joint to cause arthritis.

.....

.....

- 2** Explain why arthritis makes it more difficult to move a joint.

.....

.....

- 3** Explain why titanium is used to make artificial joints.

.....

.....

- 4** Explain why the surfaces of artificial joints must be very smooth.

.....

.....